

HOMEWORK

If the domain of a function is all real numbers, any number can be used as an input value. You can use the table function on your calculator to make a table of values.

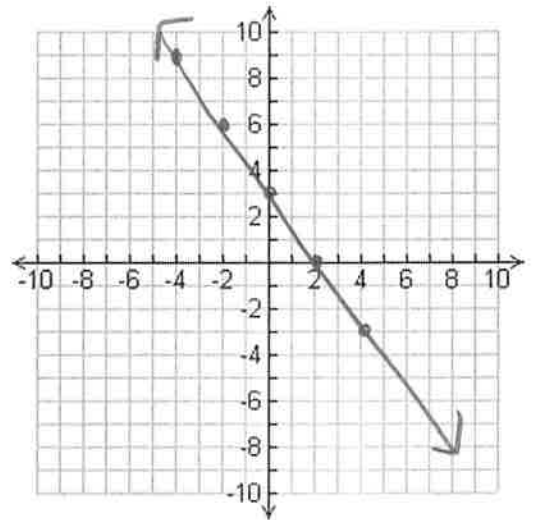
Steps to make a table on the calculator.

- 1.) Solve the equation for y.
- 2.) Enter the equation in $y=$
- 3.) To view your table, 2^{nd} Graph
- 4.) Scroll up and down to see all of the table values.

Graph each function by making a table of values on your calculator.

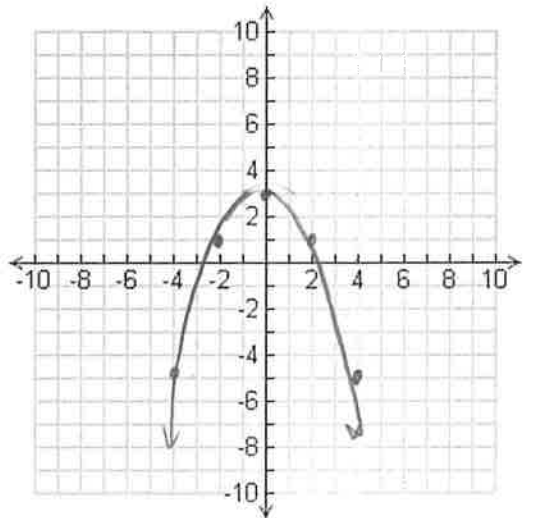
1. Graph $y = -\frac{3}{2}x + 3$

x	y
-4	9
-2	6
0	3
2	0
4	-3



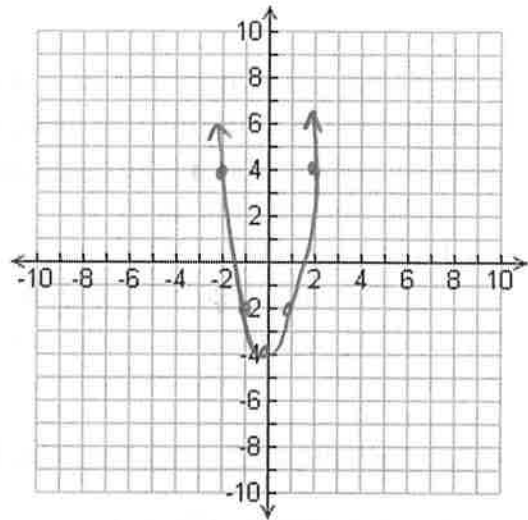
2. Graph $f(x) = -\frac{1}{2}x^2 + 3$

x	y
-4	-5
-2	1
0	3
2	1
4	-5



3. $f(x) = 2x^2 - 4$

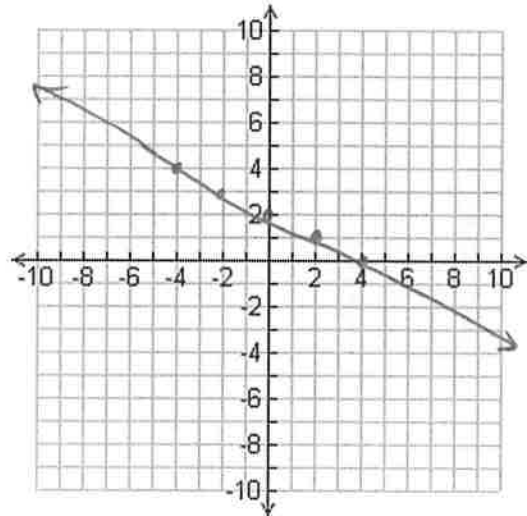
x	y
-2	4
-1	-2
0	-4
1	-2
2	4



4. Graph $3x + 6y = 12$

$$y = -\frac{1}{2}x + 2$$

x	y
-4	4
-2	3
0	2
2	1
4	0



5. Graph $x - 4y = 8$

$$y = \frac{1}{4}x - 2$$

x	y
-8	-4
-4	-3
0	-2
4	-1
8	0

